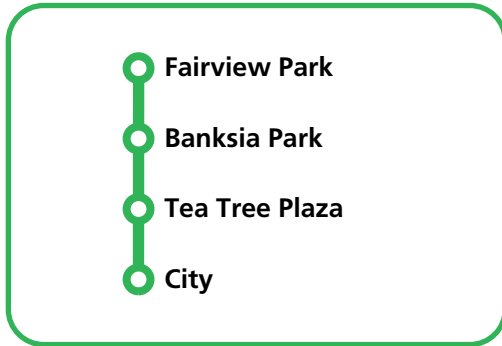




# 542 N542



Effective 25 August 2024



**542** Fairview Park to Tea Tree Plaza

**N542** Fairview Park to Tea Tree Plaza

**After Midnight**



**Services may operate to a different timetable during the December to January school holidays.**  
Visit the Adelaide Metro website during this period for full details.



## Useful information

**Visit [adelaidemetro.com.au](http://adelaidemetro.com.au)**  
Get real time journey planning, fare information, disruption alerts & more

**Great public transport apps**  
Download the one for you - Transit - Moovit - NextThere

**@AdelaideMetroSA**

**[facebook.com/AdIMetro](https://facebook.com/AdIMetro)**  
Latest service information & detours plus special event details

**InfoCentre**  
Adelaide Railway Station, North Terrace, city

**InfoLine**  
Call 1300 311 108  
7am-8pm daily

**Delays to services** may occur.  
Alternate routes may be used.  
Register or follow us for disruption advice.

**In case of emergency**  
call 000

**Disclaimer**  
This timetable is correct at the time of publication. Adelaide Metro reserves the right to make amendments when necessary. Refer to [adelaidemetro.com.au](http://adelaidemetro.com.au) for latest timetable versions.



# Is someone breaking the law on board?

## See it?

# REPORT IT!



**Fast and anonymous**  
Your reports help make public transport safer for everyone

[adelaidemetro.com.au/incident](http://adelaidemetro.com.au/incident)



## Route descriptions

**542** Fairview Park to Tea Tree Plaza Interchange via Banksia Park.  
Service operates 7 days.

**542x** Fairview Park to city via Banksia Park, Tea Tree Plaza Interchange & O-Bahn.  
Express service operates Monday-Friday.

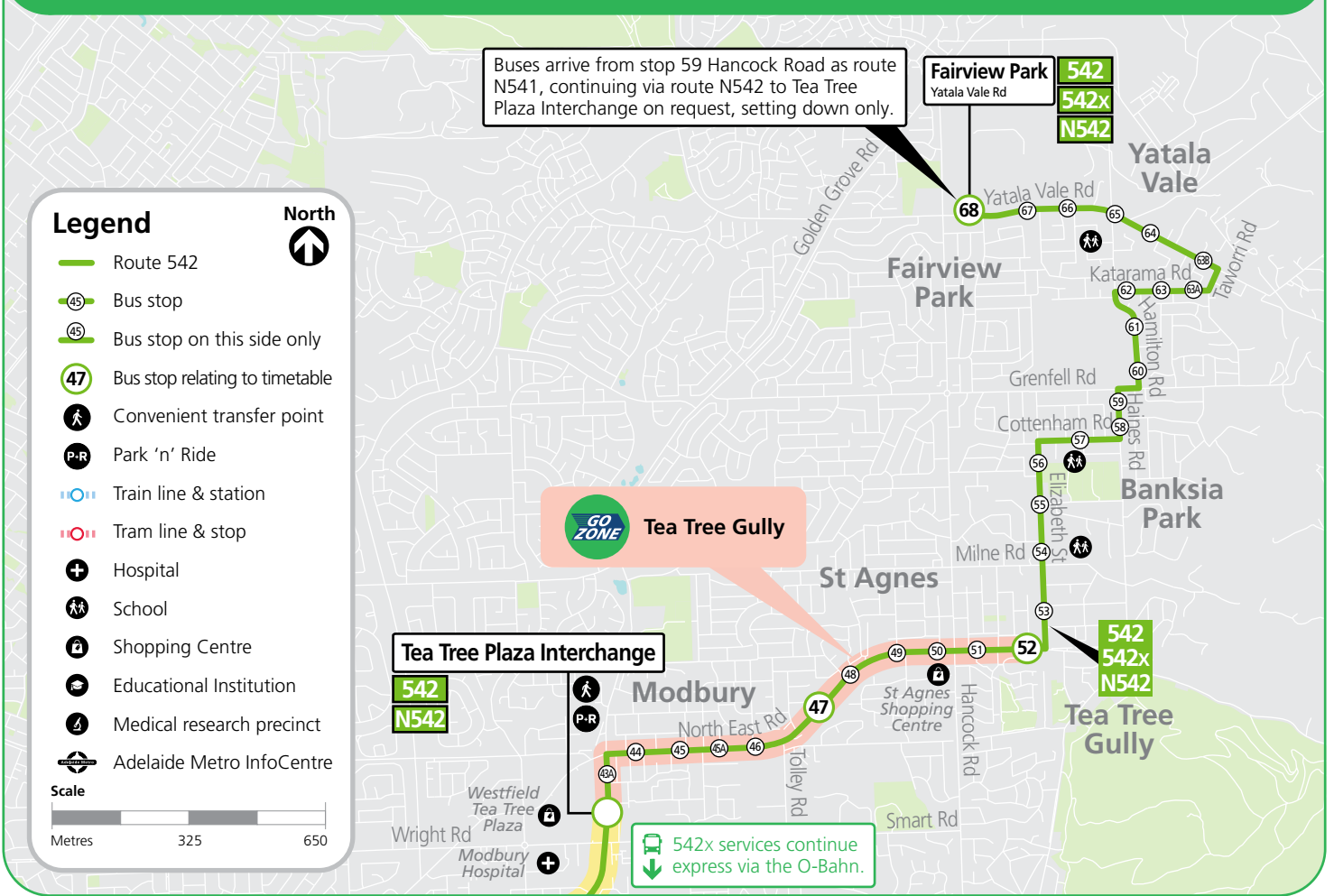
**N542** Fairview Park to Tea Tree Plaza Interchange via Banksia Park. Set down only. Operates on request. Service operates Saturday PM-Sunday AM.

**Services may operate to a different timetable during the December to January school holidays.**  
Visit the Adelaide Metro website during this period for full details.

## Tea Tree Gully

Between stops 52 North East Road and Tea Tree Plaza Interchange, catch buses 542 and 557 approximately every 15 minutes between 7:30am and 6:30pm Monday to Friday and every 30 minutes at night, Saturday, Sunday and public holidays until 10pm.

# 542, N542 Fairview Park to Tea Tree Plaza & city

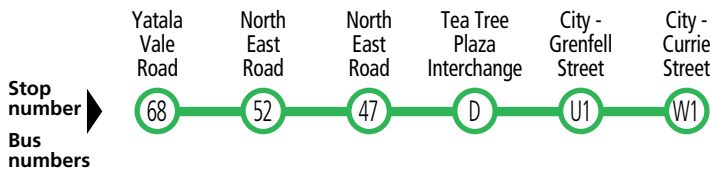


# Adelaide city





# 542 Fairview Park to Tea Tree Plaza & city



## Monday to Friday

AM	542	5:28	5:38	5:42	5:46	-	-
	542x	6:10	6:21	6:25	6:30	6:48	6:51
	542x	6:33	6:45	6:49	6:55	7:13	7:16
	542x	6:47	6:59	7:03	7:09	7:27	7:30
	542x	6:59	7:11	7:15	7:21	7:39	7:43
	542x	7:13	7:26	7:30	7:36	7:55	7:59
	542x	7:27	7:40	7:45	7:51	8:11	8:15
	542x	7:42	7:55	8:00	8:06	8:26	8:30
	542x	7:57	8:10	8:15	8:21	8:41	8:45
	542x	8:11	8:24	8:29	8:36	8:56	9:00
	542x	8:26	8:40	8:45	8:52	9:11	9:15
	542x	8:41	8:54	8:59	9:06	9:24	9:28
	542x	8:56	9:08	9:12	9:18	9:36	9:40
	542x	9:11	9:23	9:27	9:33	9:51	9:55
	542	9:37	9:48	9:52	9:57	-	-
	542	10:04	10:15	10:19	10:24	-	-
	542	10:29	10:40	10:44	10:49	-	-
	542	10:59	11:10	11:14	11:19	-	-
	542	11:29	11:40	11:44	11:49	-	-
	542	11:59	12:10	12:14	12:19	-	-
PM	542	12:29	12:40	12:44	12:49	-	-
	542	12:59	1:10	1:14	1:19	-	-
	542	1:29	1:40	1:44	1:49	-	-
	542	1:59	2:10	2:14	2:19	-	-
	542	2:29	2:40	2:44	2:49	-	-
	542	3:00	3:12	3:16	3:21	-	-
	542	3:41	3:52	3:56	4:01	-	-
	542	4:08	4:18	4:22	4:27	-	-
	542	4:38	4:48	4:52	4:57	-	-
	542	5:08	5:18	5:22	5:27	-	-
	542	5:38	5:48	5:52	5:57	-	-
	542	6:08	6:18	6:22	6:26	-	-
	542	6:35	6:45	6:49	6:53	-	-
	542	7:10	7:19	7:22	7:26	-	-
	542	8:03	8:12	8:15	8:19	-	-
	542	9:03	9:12	9:15	9:19	-	-
	542	10:03	10:12	10:15	10:19	-	-

### Explanations

542x buses operate express (no pick up or set down) between Tea Tree Plaza Interchange and the city.

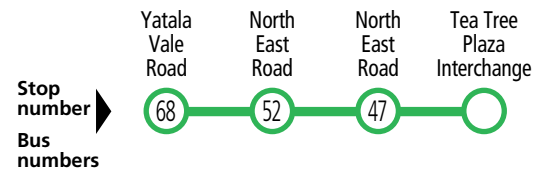


### Adelaide O-Bahn

Catch fast and frequent services to and from the city at any O-Bahn Interchange.

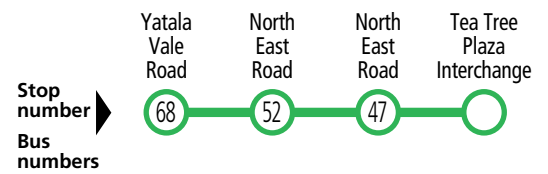


Services may operate to a different timetable during the December to January school holidays. Visit the Adelaide Metro website during this period for full details.



## Saturday only

AM	542	6:32	6:42	6:45	6:49
	542	7:35	7:45	7:49	7:54
	542	8:05	8:15	8:19	8:24
	542	9:05	9:15	9:19	9:24
	542	10:05	10:15	10:19	10:24
	542	11:05	11:15	11:19	11:24
PM	542	12:05	12:15	12:19	12:24
	542	1:05	1:15	1:19	1:24
	542	2:05	2:15	2:19	2:24
	542	3:05	3:15	3:19	3:24
	542	4:05	4:15	4:19	4:24
	542	5:05	5:15	5:19	5:24
	542	6:05	6:15	6:18	6:22
	542	7:05	7:15	7:18	7:22
	542	8:03	8:12	8:15	8:19
	542	9:03	9:12	9:15	9:19
	542	10:03	10:12	10:15	10:19

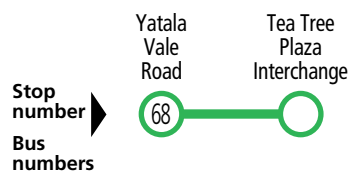


## Sunday & public holidays

AM	542	8:02	8:12	8:16	8:21
	542	9:02	9:12	9:16	9:21
	542	10:02	10:12	10:16	10:21
	542	11:02	11:12	11:16	11:21
PM	542	12:02	12:12	12:16	12:21
	542	1:02	1:12	1:16	1:21
	542	2:02	2:12	2:16	2:21
	542	3:02	3:12	3:16	3:21
	542	4:02	4:12	4:16	4:21
	542	5:02	5:12	5:16	5:21
	542	6:05	6:15	6:18	6:22
	542	7:05	7:15	7:18	7:22
	542	8:03	8:12	8:15	8:19
	542	9:03	9:12	9:15	9:19
	542	10:03	10:12	10:15	10:19



# N542 Fairview Park to Tea Tree Plaza

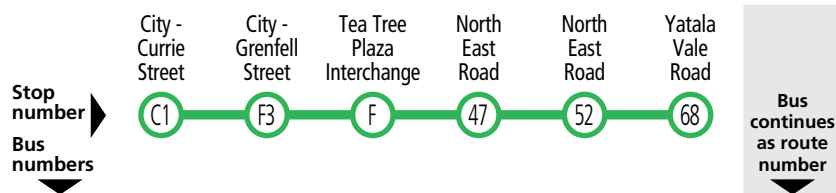


## Saturday PM-Sunday AM

AM	N542	1:36	Bus continues to Tea Tree Plaza Interchange on request, setting down only
	N542	2:36	
	N542	3:36	
	N542	4:36	



# 542 City & Tea Tree Plaza to Fairview Park



## Monday to Friday

	542							541x
AM	542	-	-	7:18	7:21	*7:25	7:36	541x
	542	-	-	7:48	7:51	*7:55	8:06	541x
	542	-	-	8:18	8:22	*8:26	8:38	541x
	542	-	-	8:49	8:52	*8:56	9:08	541x
	542	-	-	9:26	9:29	*9:33	9:44	541
	542	-	-	9:56	9:59	*10:03	10:14	541
	542	-	-	10:26	10:29	*10:33	10:44	541
	542	-	-	10:56	10:59	*11:03	11:14	541
PM	542	-	-	11:26	11:29	*11:33	11:44	541
	542	-	-	11:56	11:59	*12:03	12:14	541
	542	-	-	12:26	12:29	*12:33	12:44	541
	542	-	-	12:56	12:59	*1:03	1:14	541
	542	-	-	1:26	1:29	*1:33	1:44	541
	542	-	-	1:50	1:53	*1:57	2:09	541
	542	-	-	2:20	2:23	*2:27	2:39	541
	542x	2:21	J2:26	2:44	2:48	*2:52	3:06	541
	542x	2:49	2:54	3:12	3:17	*3:21	3:36	541
	542x	3:19	3:24	3:42	3:47	*3:51	4:04	541
	542x	3:49	3:54	4:12	4:18	*4:22	4:35	541
	542x	4:01	4:06	4:24	4:30	*4:35	4:47	-
	542x	4:17	4:22	4:40	4:46	*4:51	5:03	541
	542x	4:33	4:38	4:56	5:02	*5:07	5:19	-
	542x	4:48	4:53	5:11	5:17	*5:22	5:34	541
	542x	5:02	5:08	5:27	5:33	*5:38	5:50	-
	542x	5:17	5:23	5:42	5:47	*5:52	6:04	541
	542x	5:31	5:37	5:56	6:01	*6:05	6:17	-
	542x	5:47	5:52	6:10	6:15	*6:19	6:31	-
	542x	6:00	6:05	6:23	6:27	*6:31	6:42	-
542x	6:18	6:23	6:41	6:45	*6:49	7:00	541	
542	-	-	7:14	7:17	*7:21	7:32	541	
542	-	-	7:44	7:47	*7:51	8:02	541	
542	-	-	8:14	8:17	*8:21	8:32	541	
542	-	-	9:14	9:17	*9:21	9:32	541	
542	-	-	10:14	10:17	*10:21	10:32	541	



Services may operate to a different timetable during the December to January school holidays. Visit the Adelaide Metro website during this period for full details.

### Legend

- J – Time shown is at stop F2 Grenfell Street, city.
- \* – Times are approximate only. Bus does not have to wait until this time to depart.

### Explanations

542x buses operate express (no pick up or set down) between stop H1 Grenfell Street, city and Tea Tree Plaza Interchange.

### Buses continue to...

541, 541x City

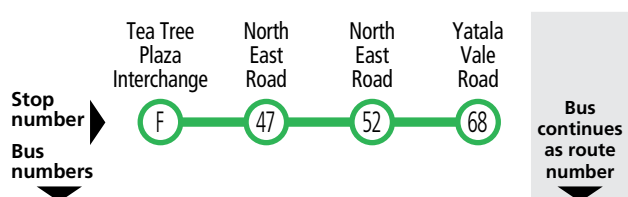


### Adelaide O-Bahn

Catch fast and frequent services to and from the city at any O-Bahn Interchange.



# 542 Tea Tree Plaza to Fairview Park

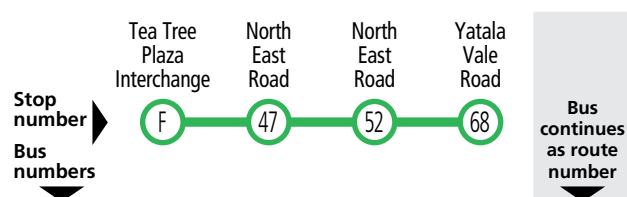


## Saturday only

	542					541
AM	542	8:37	8:40	*8:44	8:55	541
	542	9:37	9:40	*9:44	9:55	541
	542	10:37	10:40	*10:44	10:55	541
	542	11:37	11:40	*11:44	11:55	541
PM	542	12:37	12:40	*12:44	12:55	541
	542	1:37	1:40	*1:44	1:55	541
	542	2:37	2:40	*2:44	2:55	541
	542	3:37	3:40	*3:44	3:55	541
	542	4:37	4:40	*4:44	4:55	541
	542	5:31	5:34	*5:38	5:49	541
	542	6:14	6:17	*6:21	6:32	541
	542	7:14	7:17	*7:21	7:32	541
	542	8:14	8:17	*8:21	8:32	541
	542	9:14	9:17	*9:21	9:32	541
	542	10:14	10:17	*10:21	10:32	541

### Bus continues to...

541 Tea Tree Plaza Interchange & City



## Sunday & public holidays

	542					541
AM	542	9:34	9:37	*9:41	9:52	541
	542	10:34	10:37	*10:41	10:52	541
	542	11:34	11:37	*11:41	11:52	541
	542	12:34	12:37	*12:41	12:52	541
PM	542	1:34	1:37	*1:41	1:52	541
	542	2:34	2:37	*2:41	2:52	541
	542	3:34	3:37	*3:41	3:52	541
	542	4:34	4:37	*4:41	4:52	541
	542	5:31	5:34	*5:38	5:49	541
	542	6:14	6:17	*6:21	6:32	541
	542	7:14	7:17	*7:21	7:32	541
	542	8:14	8:17	*8:21	8:32	541
	542	9:14	9:17	*9:21	9:32	541
	542	10:14	10:17	*10:21	10:32	541

### Legend

- \* – Times are approximate only. Bus does not have to wait until this time to depart.