



# Handy hints



for travelling on the

# Adelaide Metro

public transport system

## Hailing the bus



Some bus stops in the Adelaide Metro public transport system are used by more than one bus route, therefore it is necessary that you always hail the bus you require. This can be done by clearly raising your arm so the driver will know you want that particular bus to stop.

## Validating your ticket



When you get on the bus you will notice a blue box called a validator just to the right. This is where you insert the ticket that you have bought from the driver or pre purchased from one of our many Metroticket retailers. Insert the ticket into the validator machine face up and with the arrows pointing forward. The ticket will then be validated. You must validate your ticket each time you board a service, even if you are transferring from one service to another.

## Getting off the bus



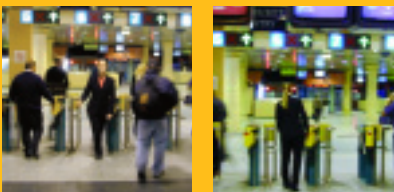
There are two ways of letting the bus driver know that you would like to get off the bus, either by pressing the red button located on the pole attached to the seat, or by pulling the cord running along the top of the windows on either side of the bus. This will activate the "Stopping" sign on the roof of the bus and will notify the driver that you want to get off at the next available bus stop.

## Can you buy a ticket on board the tram?

Yes, you can purchase tickets from the conductor on board the tram.



## Accessing Adelaide Railway Station platforms



Adelaide Station has yellow validating machines which you need to insert your ticket into to enter or leave the platforms. Please note: The yellow validator does not validate your ticket, it is only used as an entry/exit device.

## Buying a ticket on board the train

You can buy Singletrip and Daytrip tickets from the Ticket Vending Machine located on board the train.



These Ticket Vending Machines do not accept notes or 5 cent coins and you must validate after purchasing your ticket using the validator attached to the Ticket Vending Machine.

## General travelling tips

- Tickets can be used on all metropolitan buses, trains & trams displaying the Metroticket signage.
- You must carry your ticket at all times and if travelling on a Concession Holder ticket you must carry a South Australian Government approved concession card.
- Bus drivers & tram conductors only carry limited change; please have **small** notes or coins ready prior to boarding.
- You must validate your ticket each time you board a service, even if you are transferring from one service to another.

For more information, contact the Passenger Transport InfoLine

**Call 8210 1000**

For hearing impaired, call (TTY) on 8303 0844.

Lines open 7am-8pm, 7 days a week.

Or call into the Passenger Transport InfoCentre, corner King William and Currie Streets, Adelaide.

Open 8am - 6pm Monday to Saturday and 10.30am - 5.30pm Sunday.

Let us contact you when services change with direct sms and/or email [www.adelaidemetro.com.au](http://www.adelaidemetro.com.au)

